



Goodwyn Mills Cawood
1906 E Three Notch Street
Andalusia, Alabama 36421
T 334.222.2699

TRANSMITTAL COVER SHEET

DATE: SEPTEMBER 8, 2025
TO: ALL CONTRACTORS
FROM: DUSTIN TILL, P.E.
PROJECT: RAW WATER INTAKE UPGRADE
CHATTAHOOCHEE VALLEY WATER SUPPLY DISTRICT
GMC PROJECT NO: CMGM220052
RE: ADDENDUM #3

PLEASE COMPLETE BELOW AND EMAIL IMMEDIATELY TO:

patsy.stinson@gmcnetwork.com

I, the undersigned, hereby acknowledge receipt of this Addendum.

Authorized Representative of Contractor

Date

Company Name

Telephone

Fax

Contractor's License Number (if applicable)



ADDENDUM NUMBER 3

RAW WATER INTAKE UPGRADE

FOR

CHATTAHOOCHEE VALLEY WATER SUPPLY DISTRICT

GMC PROJECT NO. CMGM220052

1. General

- 1.1 The following revisions are hereby added as Addendum No. 3 to the referenced Project Manual and Plans and shall be considered when preparing bids.
- 1.2 The bid date has been postponed to Thursday, September 18 at 10:00 am EST.
- 1.3 The contractor may bid a conventional cast-in-place concrete wetwell in lieu of caisson construction if desired. The contractor shall include all costs associated with shoring, dewatering, etc. if this option is chosen.

2. Attachments

- 2.1 Structural drawings of wetwell for traditional construction in lieu of caisson.

3. Acknowledgement of Receipt

- 3.1 Receipt of Addendum No. 3 shall be acknowledged in two ways:


- 3.1.1 Note on (EJCDC C-410) Bid Form – Bidder acknowledges receipt of “Addendum No. 3” and date of “September 8, 2025”.

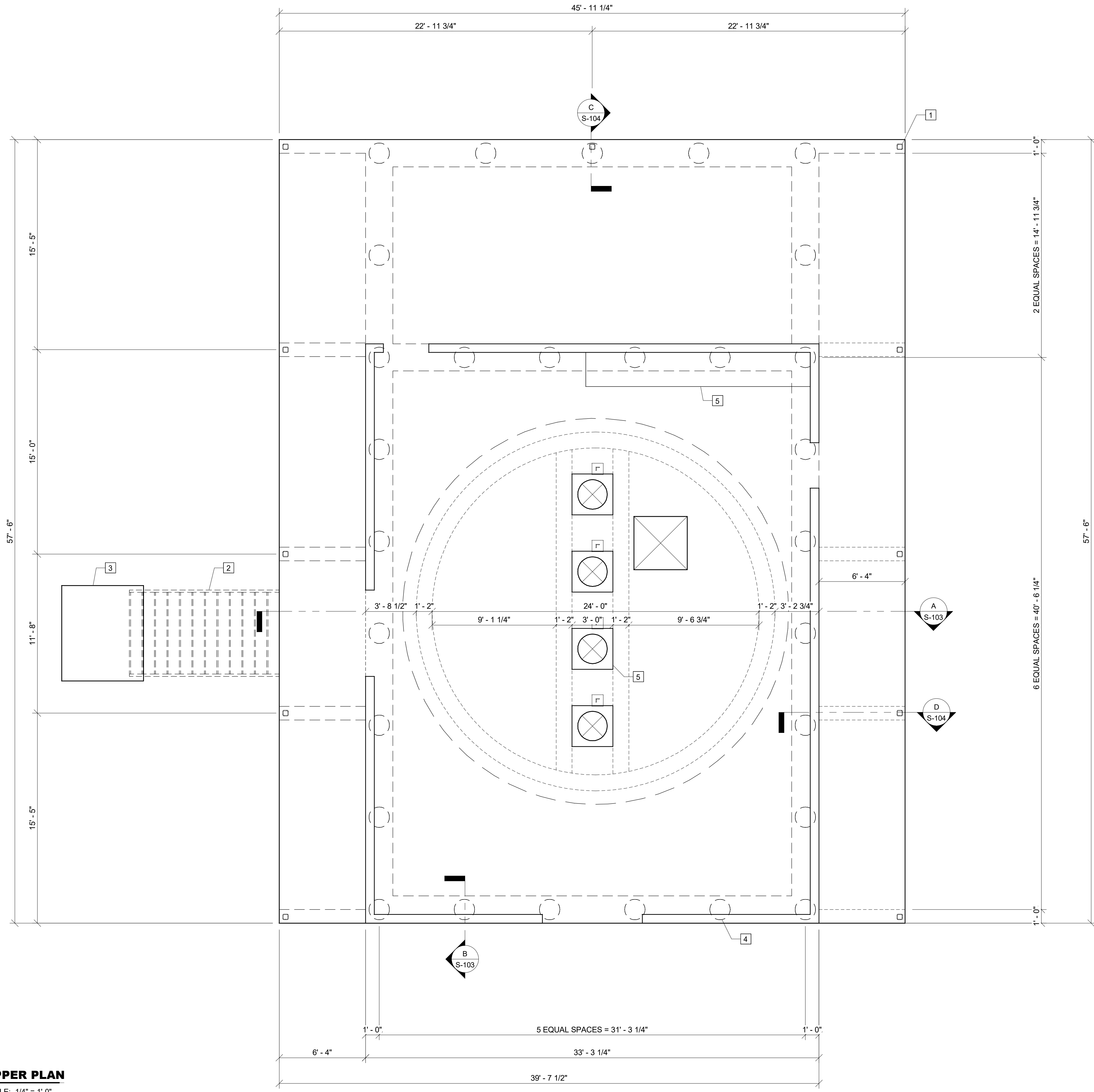
AND

- 3.1.2 EMAIL GMC immediately at patsy.stinson@gmcnetwork.com and confirm that addendum has been received and is legible with signed Acknowledgement attached.

4. Conclusion

- 4.1 This is the end of Addendum No. 3, dated Monday, September 8, 2025.

 **1** **UPPER PLAN**
S-101 SCALE: 1/4" = 1'-0"



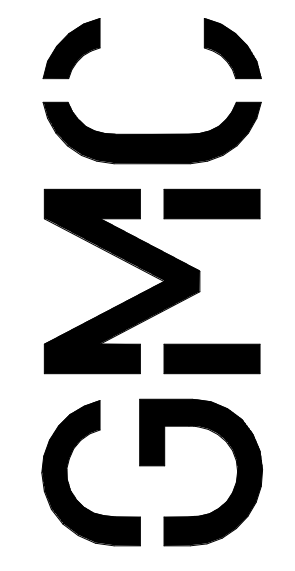
KEY NOTES: #

1. GALVANIZED HSS4x4x1/4 TUBE COLUMN w/ BASE PLATE
5/8"x12"x1'-0" w/ (4) 3/4" DIA. x 10" H.S. ANCHORS
2. PREFABRICATED STAIR BY OTHERS (SEE PROCESS)
3. CONCRETE PAVING BY OTHERS (SEE CIVIL)
4. 18" DRILLED SHAFT BELOW
5. EQUIPMENT PAD (SEE S-002 FOR DETAILS)

NEW RAW WATER INTAKE
FOR CHATTAHOOCHEE VALLEY
WATER SUPPLY DISTRICT
LANETT, ALABAMA

ISSUE	DATE
30% Submittal	01.31.2023
90% Submittal	05.26.2023
Bid Set	
Conformed Set	
Project Manager:	JWC
Engineer:	JD
Designer:	JD
Drawn By:	JD

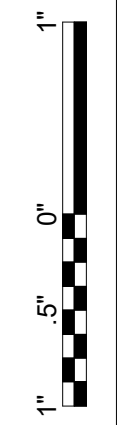
2660 East Chase Lane, Suite 200
Montgomery, AL 36117
T 334.271.3200



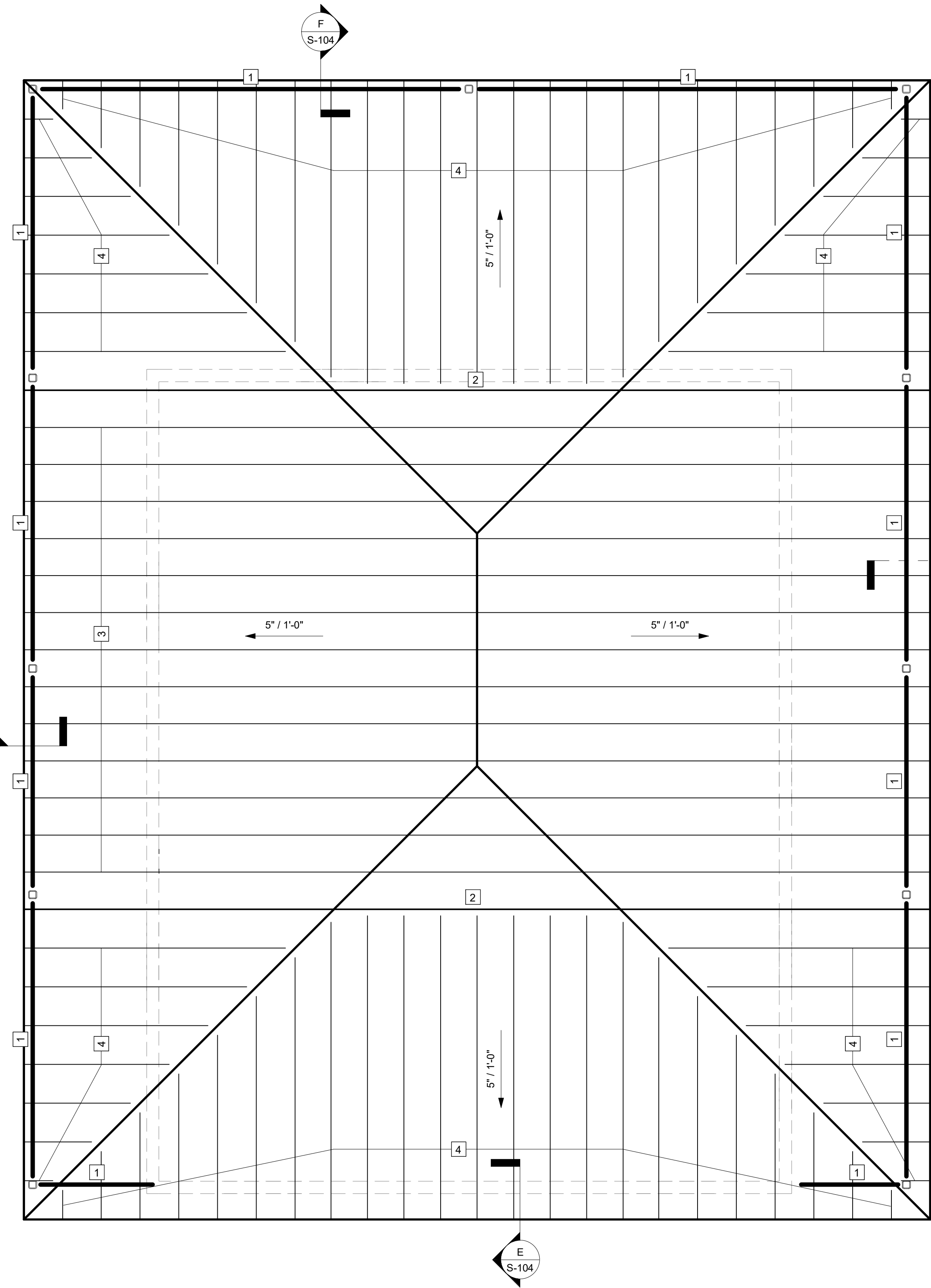
**RAW WATER INTAKE -
UPPER PLAN**

S-101

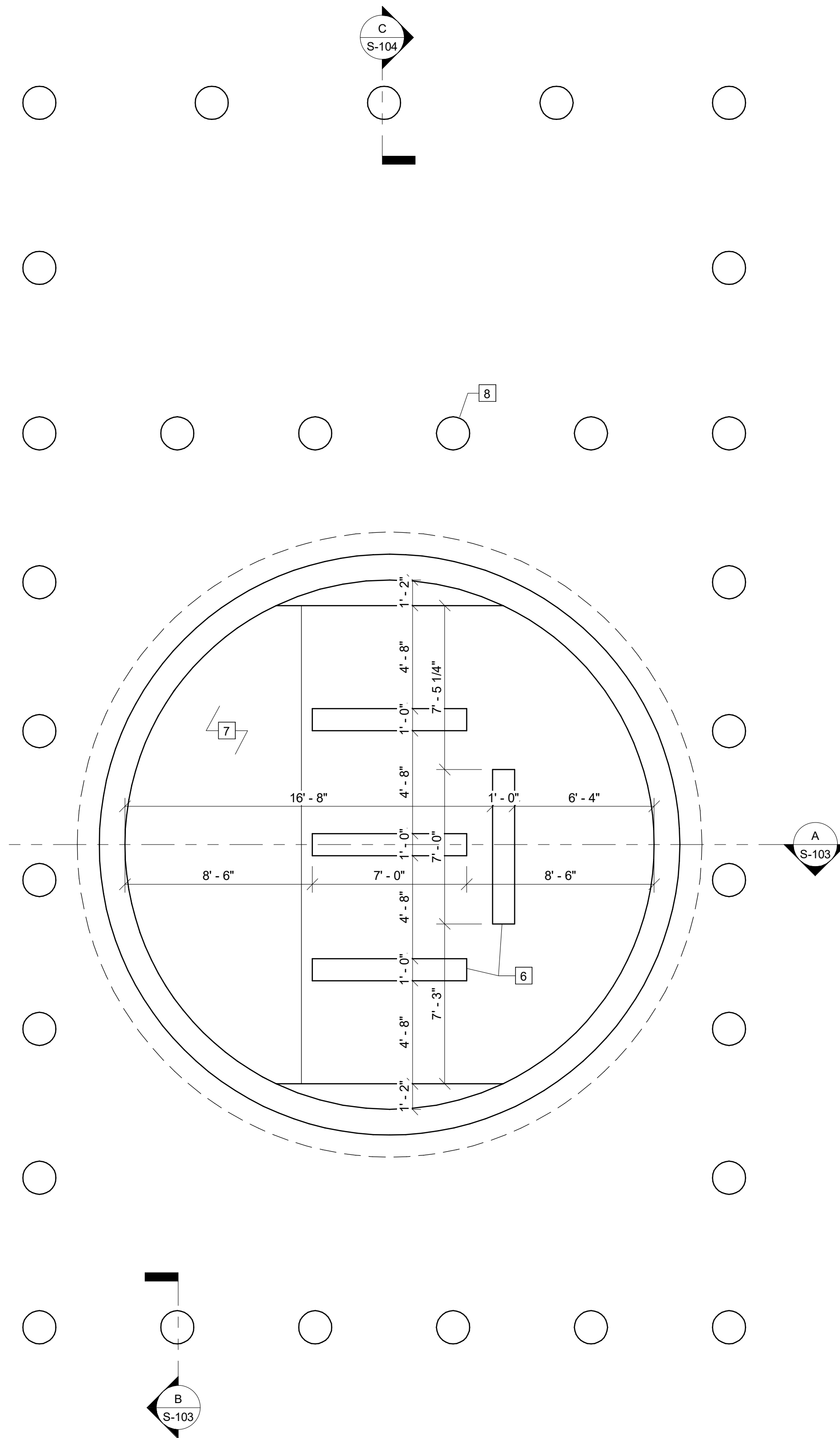
PROJECT # CMGM220052



BM 360\\CMGM220052 RAW WATER INTAKE UPGRADE\CMGM220052 RAW WATER INTAKE.v1
6/15/2023 2:02:43 PM



1 ROOF FRAMING PLAN
S-102 SCALE: 1/4" = 1'-0"



2 LOWER PLAN
S-102 SCALE: 1/4" = 1'-0"

- KEY NOTES:** #
1. GALVANIZED W12x19 STEEL ROOF SUPPORT BEAM
 2. PREFABRICATED LIGHT GAUGE STEEL GIRDER TRUSS
 3. PREFABRICATED LIGHT GAUGE STEEL TRUSSES @ 2'-0" MAX. O.C.
 4. PREFABRICATED LIGHT GAUGE STEEL JACK TRUSSES @ 2'-0" MAX. O.C.
 5. 600S200-54 OUTRIGGERS @ 2'-0" MAX. O.C.
 6. 7'-0" HIGH BAFFLE WALL (TYPICAL)
 7. SLOPED GROUT FILL (SEE PROCESS)
 8. 18" DIAMETER DRILLED SHAFT (TYPICAL)

**RAW WATER INTAKE -
ROOF FRAMING PLAN
AND LOWER PLAN**

S-102

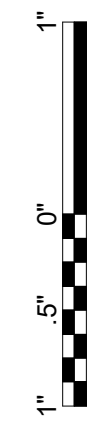
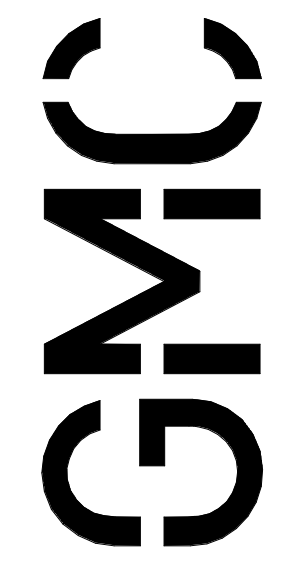
NEW RAW WATER INTAKE

FOR CHATTAHOOCHEE VALLEY
WATER SUPPLY DISTRICT
LANETT, ALABAMA

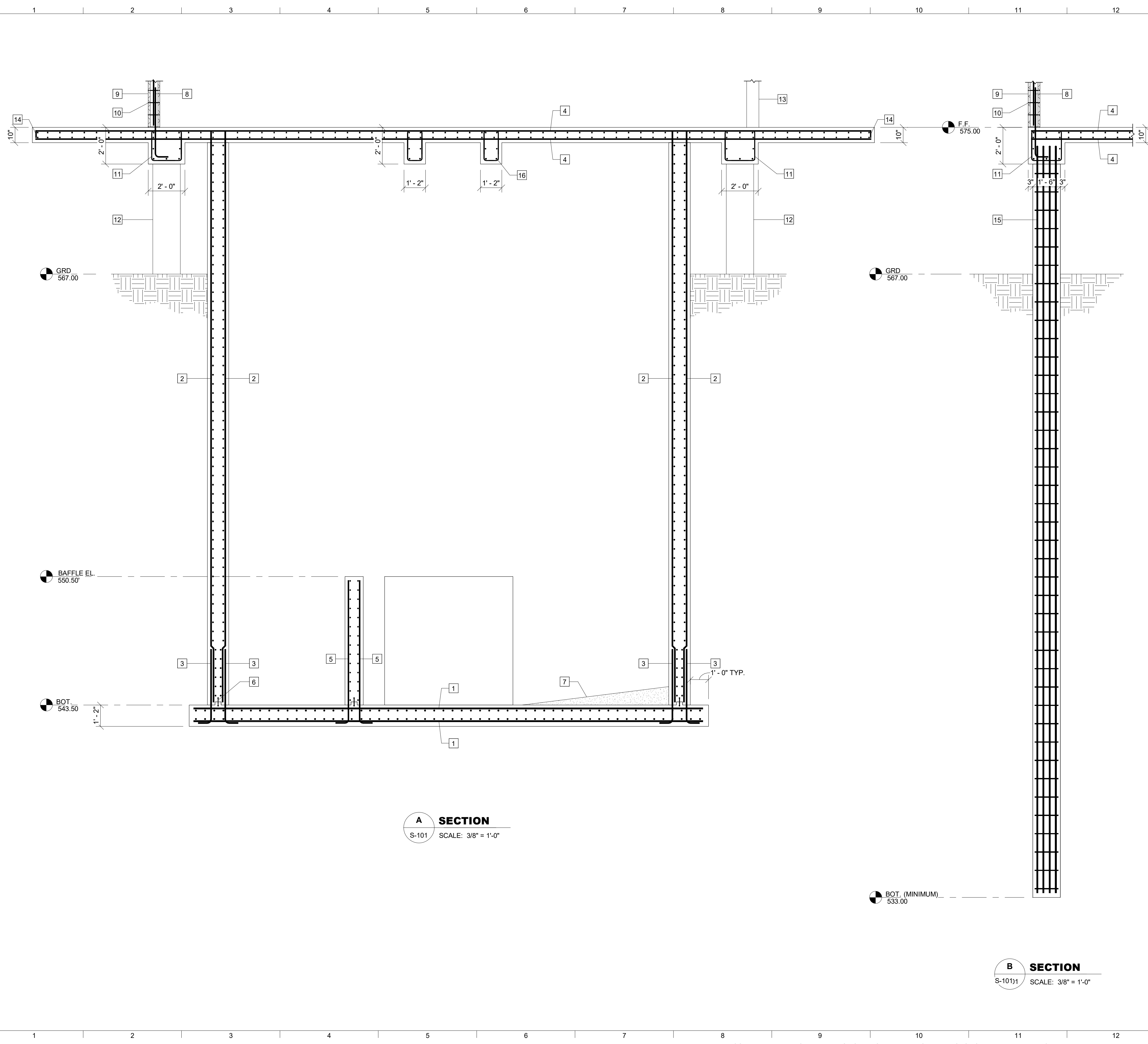
PROJECT # CMGM220052

ISSUE	DATE
30% Submittal	01.31.2023
90% Submittal	05.26.2023
Bid Set	
Confirmed Set	
Project Manager:	JWC
Engineer:	JD
Designer:	JD
Drawn By:	JD

2660 East Chase Lane, Suite 200
Montgomery, AL 36117
T 334.271.3200



BIM 360://CMGM220052 RAW WATER INTAKE UPGRADE/CMGM220052 RAW WATER INTAKE.rvt
 6/15/2023 2:02:43 PM



A SECTION
 S-101 SCALE: 3/8" = 1'-0"

B SECTION
 S-1011 SCALE: 3/8" = 1'-0"

- KEY NOTES:** #
1. #7 @ 6" MAX. O.C. EACH WAY
 2. #6 @ 6" MAX. O.C. EACH WAY
 3. VERTICAL DOWELS SAME SIZE AND SPACING AS VERTICAL WALL REINFORCING (LAP PER SCHEDULE)
 4. #5 @ 8" MAX. O.C. EACH WAY
 5. #5 @ 6" MAX. O.C. EACH WAY
 6. 6" PVC WATERSTOP (TYPICAL)
 7. SLOPED GROUT FILL (SEE PROCESS)
 8. #5 VERTICAL DOWELS @ 24" MAX. O.C.
 9. 8" CMU WALL w/ #5 VERTICAL @ 24" MAX. O.C. FILL ALL REINFORCED CELLS FULL HEIGHT WITH GROUT
 10. HORIZONTAL MASONRY REINFORCEMENT @ 16" MAX. O.C.
 11. (4) #6 CONTINUOUS TOP AND BOTTOM w/ #3 STIRRUPS @ 8" MAX. O.C.
 12. CONCRETE DRILLED PIER BEYOND
 13. CMU WALL BEYOND
 14. STANDARD ACI 90 DEGREE HOOK TOP BARS ONLY
 15. (8) #7 VERTICAL w/ #4 HOOPS @ 12" MAX. O.C. (MINIMUM REINFORCING AND MAY BE MODIFIED BY PIER INSTALLER AS DESIRED WITH APPROVAL FROM ENGINEER)
 DRILLED PIERS REQUIRED UNFACTORED AXIAL CAPACITY:
 DL = 35 KIPS
 LL = 30 KIPS
 16. (2) #6 CONTINUOUS TOP AND BOTTOM w/ #3 STIRRUPS @ 8" MAX. O.C.

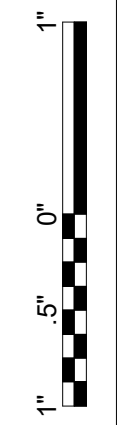
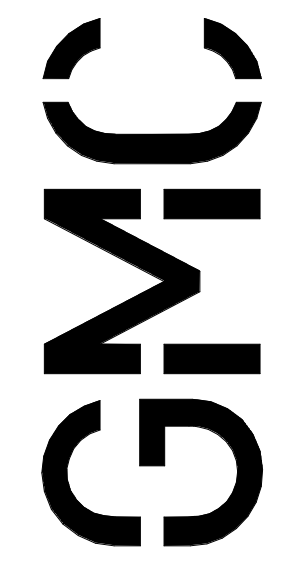
RAW WATER INTAKE - SECTION
 NEW RAW WATER INTAKE
 FOR CHATTAHOOCHEE VALLEY
 WATER SUPPLY DISTRICT
 LANETT, ALABAMA

S-103

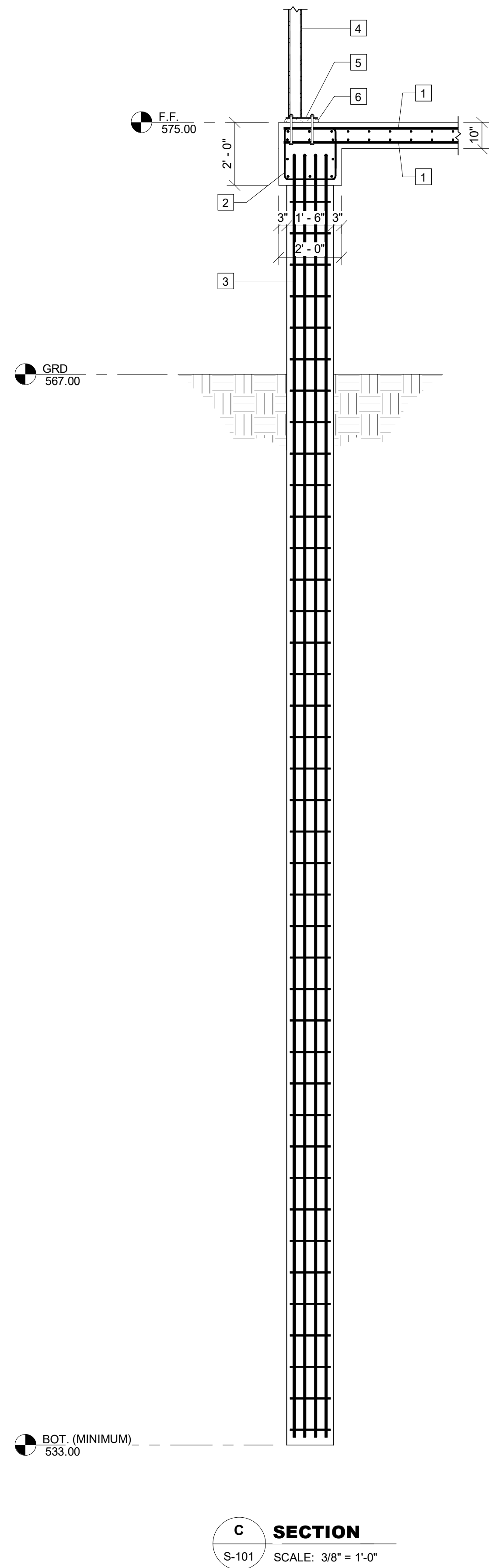
PROJECT # CMGM220052

ISSUE	DATE
30% Submittal	01.31.2023
90% Submittal	05.26.2023
Bid Set	
Confirmed Set	
Project Manager:	JWC
Engineer:	JD
Designer:	JD
Drawn By:	JD

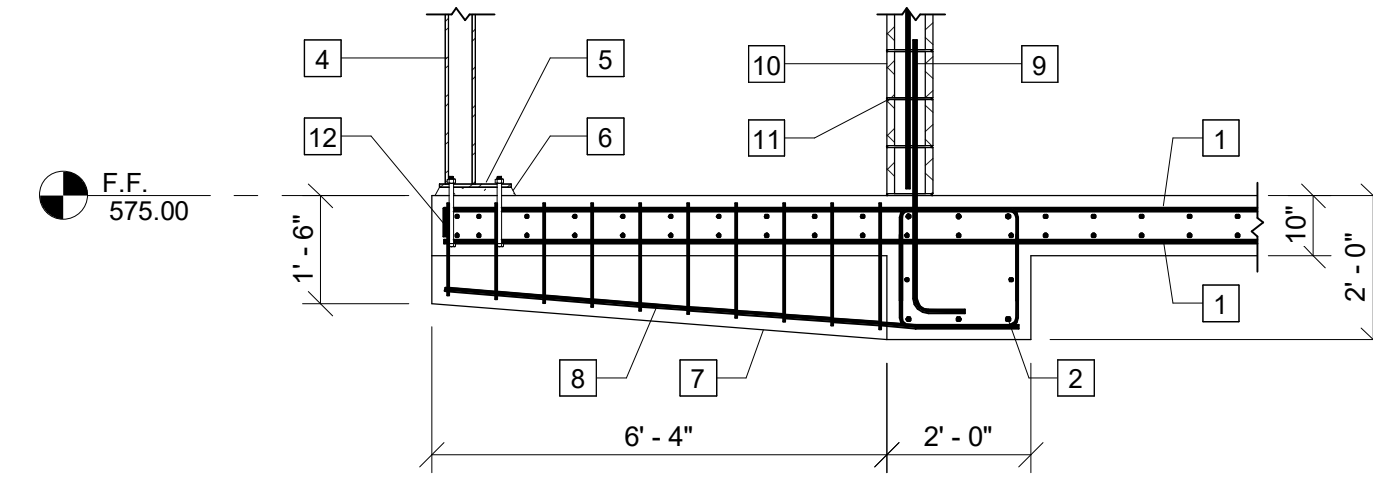
2660 East Chase Lane, Suite 200
 Montgomery, AL 36117
 T 334.271.3200



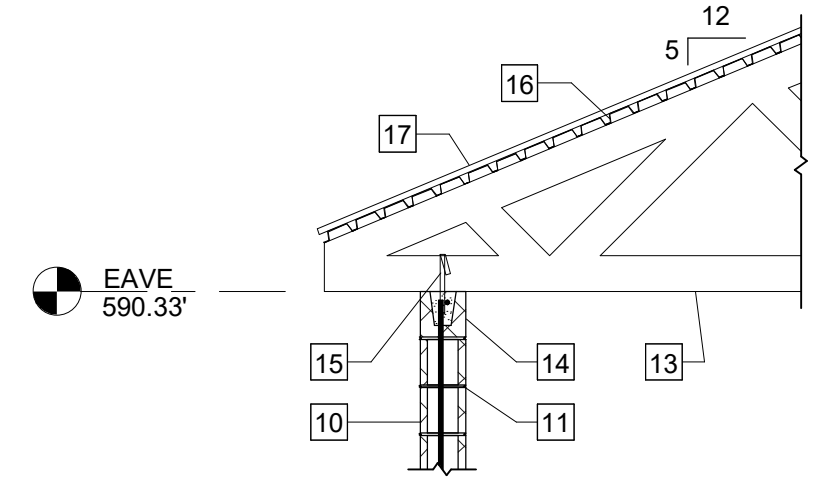
B:\360\CMGM220052 RAW WATER INTAKE UPGRADE\CMGM220052 RAW WATER INTAKE.vrt
6/15/2023 2:02:43 PM



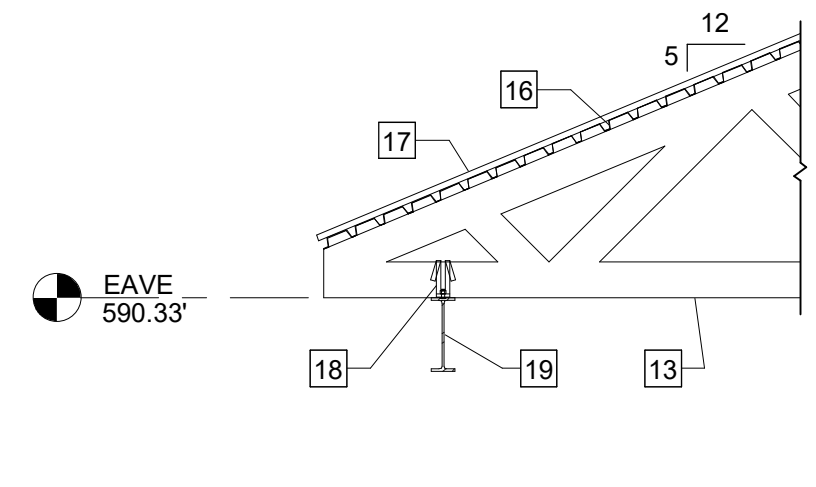
C SECTION
S-101 SCALE: 3/8" = 1'-0"



D SECTION
S-101 SCALE: 3/8" = 1'-0"



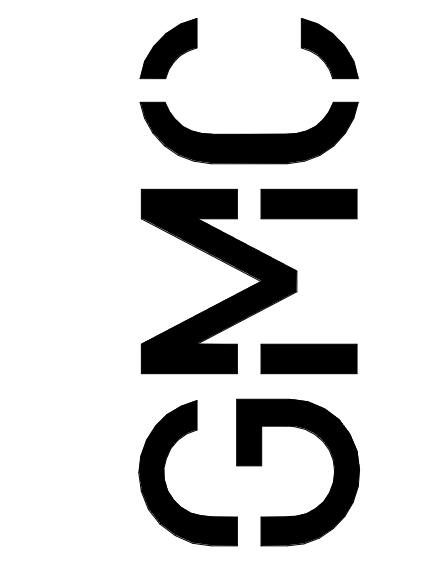
E SECTION
S-102 SCALE: 3/8" = 1'-0"



F Detail 10
S-102 SCALE: 3/8" = 1'-0"

KEY NOTES: #

1. #5 @ 8" MAX. O.C. EACH WAY
2. (4) #6 CONTINUOUS TOP AND BOTTOM w/ #3 STIRRUPS @ 8" MAX. O.C.
3. (8) #7 VERTICAL w/ #4 HOOPS @ 12" MAX. O.C. (MINIMUM REINFORCING AND MAY BE MODIFIED BY PIER INSTALLER AS DESIRED WITH APPROVAL FROM ENGINEER)
DRILLED PIERS REQUIRED UNFACTORED AXIAL CAPACITY:
DL = 35 KIPS
LL = 30 KIPS
4. GALVANIZED HSS4x4x1/4 COLUMN (TYPICAL)
5. GALVANIZED STEEL BASE PL 5/8"x12"x1'-0 w/ (4) 3/4"x10" H.S. ANCHORS
6. 1" MIN. GROUT LEVELING BED (TYPICAL)
7. 12" WIDE BEAM (TAPER FROM 2'-0" DEEP TO 1'-6" DEEP)
8. (2) #5 CONTINUOUS TOP AND BOTTOM w/ #3 STIRRUPS @ 8" MAX. O.C.
9. #5 VERTICAL DOWELS @ 24" MAX. O.C.
10. 8" CMU WALL w/ #5 VERTICAL @ 24" MAX. O.C. FILL ALL REINFORCED CELLS FULL HEIGHT WITH GROUT
11. HORIZONTAL MASONRY REINFORCEMENT @ 16" MAX. O.C.
12. STANDARD ACI 90 DEGREE HOOK TOP BARS ONLY
13. PREFABRICATED LIGHT GAUGE STEEL ROOF TRUSSES (SEE PLAN FOR SPACING AND LOCATION)
14. 8" CONTINUOUS BOND BEAM w/ #5 CONTINUOUS
15. SIMPSON META16 TRUSS TIEDOWN AT EACH TRUSS
16. 1.5B22 STEEL ROOF DECK
17. ROOF DECKING BY OTHERS (SEE ARCH.)
18. SIMPSON MGT TIEDOWN w/ 5/8" WELDED STUD @ EACH TRUSS
19. GALVANIZED W12x19 STEEL ROOF SUPPORT BEAM



2660 East Chase Lane, Suite 200
Montgomery, AL 36117
T 334.271.3200

ISSUE	DATE
30% Submittal	01.31.2023
90% Submittal	05.26.2023
Bid Set	
Confirmed Set	
Project Manager:	JWC
Engineer:	JD
Designer:	JD
Drawn By:	JD

NEW RAW WATER INTAKE
FOR CHATTAHOOCHEE VALLEY
WATER SUPPLY DISTRICT
LANETT, ALABAMA

PROJECT # CMGM220052

RAW WATER INTAKE - SECTIONS

S-104