



Goodwyn Mills Cawood
1906 E Three Notch Street
Andalusia, AL 36421
T. 334-222-2699

TRANSMITTAL COVER SHEET

DATE: JANUARY 23, 2026

TO: ALL CONTRACTORS

FROM: DUSTIN TILL

PROJECT: CWSRF WWTF IMPROVEMENTS
WATER WORKS AND SEWER BOARD OF THE CITY OF DADEVILLE
SRF PROJECT NO: CS010867-03
GMC PROJECT NO: CMGM240012

RE: ADDENDUM #2

PLEASE COMPLETE BELOW AND RETURN IMMEDIATELY.

Patsy Stinson
Email: patsy.stinson@gmcnetwork.com

I, the undersigned, hereby acknowledge receipt of this Addendum.

Authorized Representative of Contractor

Date

Company Name

Telephone

Contractor's License Number (if applicable)



ADDENDUM NUMBER 2

CWSRF WWTF IMPROVEMENTS

FOR

WATER WORKS AND SEWER BOARD OF THE CITY OF DADEVILLE

SRF PROJECT NO. CS010867-03

GMC PROJECT NO. CMGM240012

1. **Revisions to Project Manual**

- 1.1 The following revisions are hereby added as Addendum No. 2 to the referenced Project Manual and Plans and shall be considered when preparing bids.
- 1.2 A revised Project Manual has been uploaded to Skysite in the Addendum #2 folder that includes revised Specifications. All bidders shall use the revised Project Manual for preparing proposals and for all work moving forward.

2. **Revisions to Plans**

- 2.1 Electrical Pages E-001, E-101 & E-301 are hereby added as Addendum No. 2 and shall be considered when preparing proposals and for all work moving forward.

3. **Acknowledgement of Receipt**

- 3.1 Receipt of Addendum No. 2 shall be acknowledged in two ways:
 - 3.1.1 Note on (EJCDC C-410) Bid Form – Bidder acknowledges receipt of “Addendum No. 2” and date of “January 23, 2026”.

AND

- 3.1.2 EMAIL the signed transmittal sheet to patsy.stinson@gmcnetwork.com to confirm the addendum has been received and is legible.

4. **Conclusion**

- 1.1 This is the end of Addendum Number 2, dated Friday, January 23, 2026.

DRAWING FILE: C:\Users\mheubach\AppData\Local\Temp\AcPublish_6104E-001 - General Notes.dwg
DRAWING TITLE: Electrical Notes and Symbols
PLOTTED: 01/20/2026 10:58am

ELECTRICAL LEGEND	
PANELBOARD	
DISCONNECT. SEE PLANS & SPECIFICATIONS FOR DETAILS.	
DUPLEX RECEPTACLE WALL MOUNTED 18" A.F.F. TO CENTER UNO.	#
DUPLEX GROUND FAULT CIRCUIT INTERRUPTER (5mA) RECEPTACLE WALL MOUNTED 18" A.F.F. TO CENTER UNO.	#
DUPLEX GROUND FAULT CIRCUIT INTERRUPTER (5mA) RECEPTACLE WALL MOUNTED 18" A.F.F. TO CENTER UNO. WITH WEATHERPROOF IN USE COVER.	# WP
WEATHERPROOF TOGGLE SWITCH.	\$ WP
MOTOR - HORSEPOWER AS INDICATED ON PLANS.	
CIRCUIT OR RACEWAY EXPOSED TO VIEW. RUN PARALLEL OR PERPENDICULAR TO STRUCTURE. CONCEAL FROM VIEW AS MUCH AS POSSIBLE.	
CONDUIT OR RACEWAY CONCEALED. (UNDERGROUND, ABOVE CEILING, WALL CAVITY).	
HOMERUN EXPOSED TO VIEW.	
CONCEALED HOMERUN. (UNDERGROUND, ABOVE CEILING, WALL CAVITY).	
GROUND ROD & CONNECTION. ('T' INDICATES TEST WELL). SEE DETAIL 6/E-901 AND 4/E-902.	
GROUND CONNECTION, 1-HOLE OR 2-HOLE SOLDERLESS MECHANICAL OR COMPRESSION LUG.	
GROUND CONNECTION, EXOTHERMIC.	
GROUND CABLE FOR GROUNDING ELECTRODE SYSTEM (GES).	

ABBREVIATIONS			
ABBREVIATION	DESCRIPTION	ABBREVIATION	DESCRIPTION
A	AMPERES	LAHJ	LOCAL AUTHORITY HAVING JURISDICTION
AC	AIR CONDITIONING	LGT	LIGHT
ACT	ABOVE COUNTER TOP	M	METER
AFF	ABOVE FINISHED FLOOR	MAT	MASTER ANTENNA TELEVISION
AIC	AMPERES INTERRUPTING CAPACITY (MIN)	MAX	MAXIMUM
APPROX.	APPROXIMATELY	MCM	THOUSAND CIRCULAR MILS
AWG	AMERICAN WIRE GAUGE	MDP	MAIN DISTRIBUTION PANEL
ANN	ANNUNCIATOR	MIN	MINIMUM
BLDG	BUILDING	MLO	MAIN LUGS ONLY
BPS	BOLTED PRESSURE SWITCH	MPC	MAIN POWER CENTER
C	CONDUIT	MTD, MTG	MOUNT (ED), (ING)
CAT	CATALOG	N	NORTH
CATV	CABLE TELEVISION	NEC	NATIONAL ELECTRIC CODE
CKT	CIRCUIT	NIC	NOT IN CONTRACT
CONT	CONTINUATION	NO	NUMBER
CR	CARD READER	NTS	NOT TO SCALE
DD	DUCT DETECTOR	OC	ON CENTER
DIA	DIAMETER	OSHA	OCCUPATIONAL SAFETY AND HEALTH ADMINISTRATION
DIM	DIMENSION	P	POLE
DP	DISTRIBUTION PANEL	PC	PHOTO CELL
DWG	DRAWINGS	PMS	PROPERTY MANAGEMENT SYSTEM
EA	EACH	PNL	PANEL
EC	EMPTY CONDUIT	PVC	POLYVINYL CHLORIDE
ELEC	ELECTRICAL	RS	RAPID START
EMER	EMERGENCY	RSC	RIGID STEEL CONDUIT
EMT	ELECTRICAL METALLIC TUBING	SD	SMOKE DETECTOR
EOL	END OF LINE RESISTOR	SIM	SIMILAR
EQUIP	EQUIPMENT	S/S	STAINLESS STEEL
F	FUSED	SPST	SINGLE POLE SINGLE THROW
FA	FIRE ALARM	T	TRANSFORMER
FIN	FINISH	TC	TRAY CABLE
FIX	FIXTURE	TBB	TELEPHONE BACKBOARD
FLUOR.	FLUORESCENT	TEL	TELEPHONE
GFI	GROUND FAULT INTERRUPTER	TM	TV MONITOR
GRC	GALVANIZED RIGID STEEL CONDUIT	TYP	TYPICAL
GRND, G	GROUND	UNO	UNLESS OTHERWISE NOTED
HP	HORSEPOWER	V	VOLT
IAW	IN ACCORDANCE WITH	W	WIRE
IF	INSIDE FROST	WP	WEATHERPROOF
IG	ISOLATED GROUND	WW	WARM WHITE
INCAN	INCANDESCENT	XFMR	TRANSFORMER
J	JUNCTION	PDC	POWER DISTRIBUTION CONTROLLER
KVA	KILO-VOLT-AMPERE	E.W.	EACH WAY
KW	KILOWATT	OCEW	ON CENTER EACH WAY

GENERAL NOTES	
<div>1. ALL ELECTRICAL WORK AND MATERIALS SHALL CONFORM TO THE LATEST EDITION OF THE N.E.C. AND THE REQUIREMENTS OF THE LOCAL AUTHORITY HAVING JURISDICTION.</div> <div>2. WIRING SYSTEMS SHALL CONSIST OF COPPER WIRING INSTALLED IN CONDUIT, MINIMUM WIRE SIZE SHALL BE #12AWG. MINIMUM CONDUIT SIZE SHALL BE 3/4".</div> <div>3. CONDUIT ABOVE CEILINGS, IN WALLS, ETC., WHERE NOT SUBJECT TO MOISTURE OR DAMAGE SHALL BE EMT. WHERE SUBJECT TO DAMAGE, OUTSIDE BUILDING SHALL BE GALVANIZED RIGID CONDUIT. CONDUITS (ALL SIZES) ROUTED EXPOSED SHALL BE ALUMINUM RIGID CONDUIT. CONDUITS SHALL BE SIZED IN ACCORDANCE WITH TABLE 1, CHAPTER NINE OF N.E.C.</div> <div>4. CONDUCTORS SHALL BE 99% COPPER (NO ALUMINUM CONDUCTORS WILL BE ACCEPTED).</div> <div>5. EQUIPMENT GROUNDING SHALL BE IN ACCORDANCE WITH N.E.C.</div> <div>6. ALL ELECTRICAL EQUIPMENT SHALL BE PROVIDED BY ELECTRICAL CONTRACTOR.</div> <div>7. ALL WORK SHALL BE COORDINATED WITH THE WORK OF OTHER TRADES TO AVOID INTERFERENCES AND CONFLICTS. REFER TO THE DRAWINGS OF THE RESPECTIVE SYSTEMS PRIOR TO SUBMISSION OF BIDS FOR ADDITIONAL WORK WHICH MAY BE REQUIRED AS PART OF THIS WORK. NO ALLOWANCES WILL BE MADE FOR THE LACK OF COORDINATION BETWEEN DISCIPLINES OR SYSTEMS AND EQUIPMENT.</div> <div>8. THE WORK SHALL BE COORDINATED WITH THE ENGINEERING DOCUMENTS FOR THE EXACT LOCATION OF LIGHT FIXTURES, EQUIPMENT, DEVICES, ETC. TO ASSURE PROPER PLACEMENT OF SAID DEVICES AND EQUIPMENT. WHERE A CONFLICT EXISTS BETWEEN ANY TWO DOCUMENTS, NOTIFY THE ENGINEER PRIOR TO ANY INSTALLATION FOR RESOLUTION.</div> <div>9. THE CONTRACTOR SHALL VERIFY ALL EQUIPMENT BEING INSTALLED PRIOR TO INSTALLATION TO ASSURE THAT THE FEEDER, DISCONNECT, STARTER, OVER CURRENT PROTECTION, ETC. MATCHES THE ACTUAL NAMEPLATE DATA AS SUPPLIED BY THE MANUFACTURER.</div> <div>10. SPECIFIC REQUIREMENTS REGARDING MATERIALS, WORKMANSHIP, AND THE WORK TO BE DONE ARE COVERED BY THE SPECIFICATIONS WHICH COMPLEMENT THE PLANS. WORK CALLED FOR BY THE SPECIFICATIONS OR THE PLANS IS REQUIRED THE SAME AS IF REQUIRED BY BOTH. WHERE A CONFLICT EXISTS BETWEEN THE PLANS AND SPECIFICATIONS, THE MORE STRINGENT REQUIREMENTS OF THE TWO SHALL APPLY.</div> <div>11. REFER TO EQUIPMENT CUT SHEETS AND MANUFACTURER'S DATA FOR ROUGH IN LOCATIONS OF ELECTRICAL CONNECTIONS AND INTERCONNECTIONS OF ALL EQUIPMENT.</div> <div>12. INSTALL OVER CURRENT PROTECTION AND BRANCH CIRCUIT WIRING PER U.L. LISTING REQUIREMENTS FOR EQUIPMENT SERVED - REFER TO NAMEPLATE DATA.</div> <div>13. PROVIDE START-UP ASSISTANCE TO OWNER PERSONNEL AND EQUIPMENT TECHNICIANS TO CONFIRM CORRECT PHASE ROTATION, PROPER OPERATION & SEQUENCE, AND CONTROLS.</div> <div>14. CONTRACTOR SHALL COORDINATE ELEVATIONS AND PIPING SYSTEM SLOPES SUCH THAT DUCTWORK, PIPING, RACEWAY, CABLE TRAY, AND ASSOCIATED EQUIPMENT IS INSTALLED AT UNIFORM ELEVATIONS WITH MINIMAL OFFSET. PROVIDE COORDINATION DRAWING TO ENGINEER FOR REVIEW PRIOR TO EQUIPMENT ORDERS AND ROUGH-IN.</div> <div>15. VERIFY ALL DOOR SWINGS WITH ARCHITECTURAL PLANS BEFORE ROUGHING IN LIGHT SWITCHES.</div> <div>16. ELECTRICAL CONTRACTOR TO FIELD MARK ELECTRICAL SERVICE EQUIPMENT WITH A CONSPICUOUS AND PERMANENT LABEL THAT INDICATES THE AVAILABLE FAULT CURRENT PER NEC 110.16 & 110.24.</div> <div>17. ELECTRICAL CONTRACTOR SHALL VERIFY THE LOCATION OF EXISTING UNDERGROUND UTILITIES PRIOR TO COMMENCEMENT OF ANY EXCAVATION.</div> <div>18. PROVIDE UNSWITCHED PHASE CONDUCTOR TO EMERGENCY LIGHTS AND/OR EXIT SIGNS FOR 24 HOUR OPERATION.</div> <div>19. ELECTRICAL EQUIPMENT SHALL BE FULLY RATED FOR THE FAULT CURRENT INDICATED ON THE PLANS. NO SERIES RATING WILL BE ACCEPTED.</div> <div>20. DO NOT INSTALL DEVICES WITHIN 24" OF EACH OTHER IN ANY FIRE RATED WALLS.</div> <div>21. SEAL ALL PENETRATIONS IN ACCORDANCE WITH A UL APPROVED METHOD TO MAINTAIN THE UL RATING OF THE WALL AS INDICATED IN ARCHITECTURAL PLANS.</div> <div>22. NO COMBUSTIBLE MATERIAL IS ALLOWED IN AIR PLENUMS.</div> <div>23. FINAL CONNECTIONS TO MOTORS AND OTHER EQUIPMENT AS INDICATED ON PLANS SHALL BE WITH FLEXIBLE STEEL CONDUIT IN DRY LOCATIONS AND LIQUID TIGHT FLEX IN WET, DAMP, OR SPRAY DOWN LOCATIONS. VERIFY EXACT LOCATION OF ALL MOTORS AND EQUIPMENT BEFORE ROUGH IN.</div> <div>24. ELECTRICAL CONTRACTOR SHALL NOTE THAT ONLY BASIC AIR CONDITIONING AND HEATING CONTROLS ARE SHOWN ON DRAWINGS. EXACT LAYOUT AND DIAGRAMS MUST BE OBTAINED FROM RESPECTIVE SUBCONTRACTORS FOR A COMPLETE COORDINATED WORKING LAYOUT.</div> <div>25. SUBSURFACE CONDUIT SHALL BE SCHEDULE 40PVC UNO. VERTICAL TURN UPS SHALL BE ARC SWEEP 90S WITH A BITUMASTIC TAPE OR PVC COATED RGC UNO.</div> <div>26. ALL EMPTY CONDUITS SHALL HAVE A 200 LBS NYLON PULL STRING. SUBSURFACE CONDUITS TURNING UP AND TERMINATING SHALL BE CAPPED ON BOTH ENDS TO PREVENT ENTRY OF RODENTS, WATER, AND OTHER FOREIGN MATTER. DUCT TAPE IS NOT CONSIDERED AN ACCEPTABLE MEANS OF CAPPING.</div> <div>27. IT SHALL BE THE RESPONSIBILITY OF THE ELECTRICAL CONTRACTOR TO VISIT THE SITE AND TO BECOME THOROUGHLY FAMILIAR WITH ALL EXISTING CONDITIONS PRIOR TO BID DATE AS HE SHALL BE RESPONSIBLE FOR THE SAME.</div> <div>28. ELECTRICAL CONTRACTOR WILL PROVIDE ALL MATERIAL TO FINALIZE A NEAT, COMPLETE, AND PROPERLY WORKING ELECTRICAL SYSTEM WHICH CONFORMS TO ALL LOCAL CODES AND THE NATIONAL ELECTRICAL CODE (N.E.C.), PLANS, AND SPECIFICATIONS.</div> <div>29. CONTRACTOR SHALL REPAIR ANY DISTURBED AREA TO SAME COMPACTION, GRADE, SLOPE, ETC. AS ORIGINAL AREA INCLUDING REPLACEMENT OF SOD, GRASS, ROCK, GRAVEL, RIP-RAP, ETC. TO THE SATISFACTION OF THE OWNER AND ENGINEER.</div> <div>30. SLOPE ALL AREAS AROUND CONCRETE PADS TO PREVENT WATER PONDING.</div> <div>31. CLEAN UP ALL DEBRIS AROUND CONSTRUCTION SITE DAILY.</div> <div>32. REMOVE ANY SPILLED DIRT, CONCRETE, ETC. FROM ANY DRIVEWAYS, ROADWAYS OR CONSTRUCTION SITE AS DIRECTED BY OWNER OR ENGINEER.</div>	



ELECTRICAL GENERAL
NOTES, LEGENDS,
AND SYMBOLS

E-001

CWSRF WWTF
IMPROVEMENTS

DADEVILLE, ALABAMA
DADEVILLE WATER WORKS & SEWAGE BOARD

GMC# CMGM240012

2660 Eastchase Lane
Suite 200
Montgomery, AL 36117
T 334.271.3200

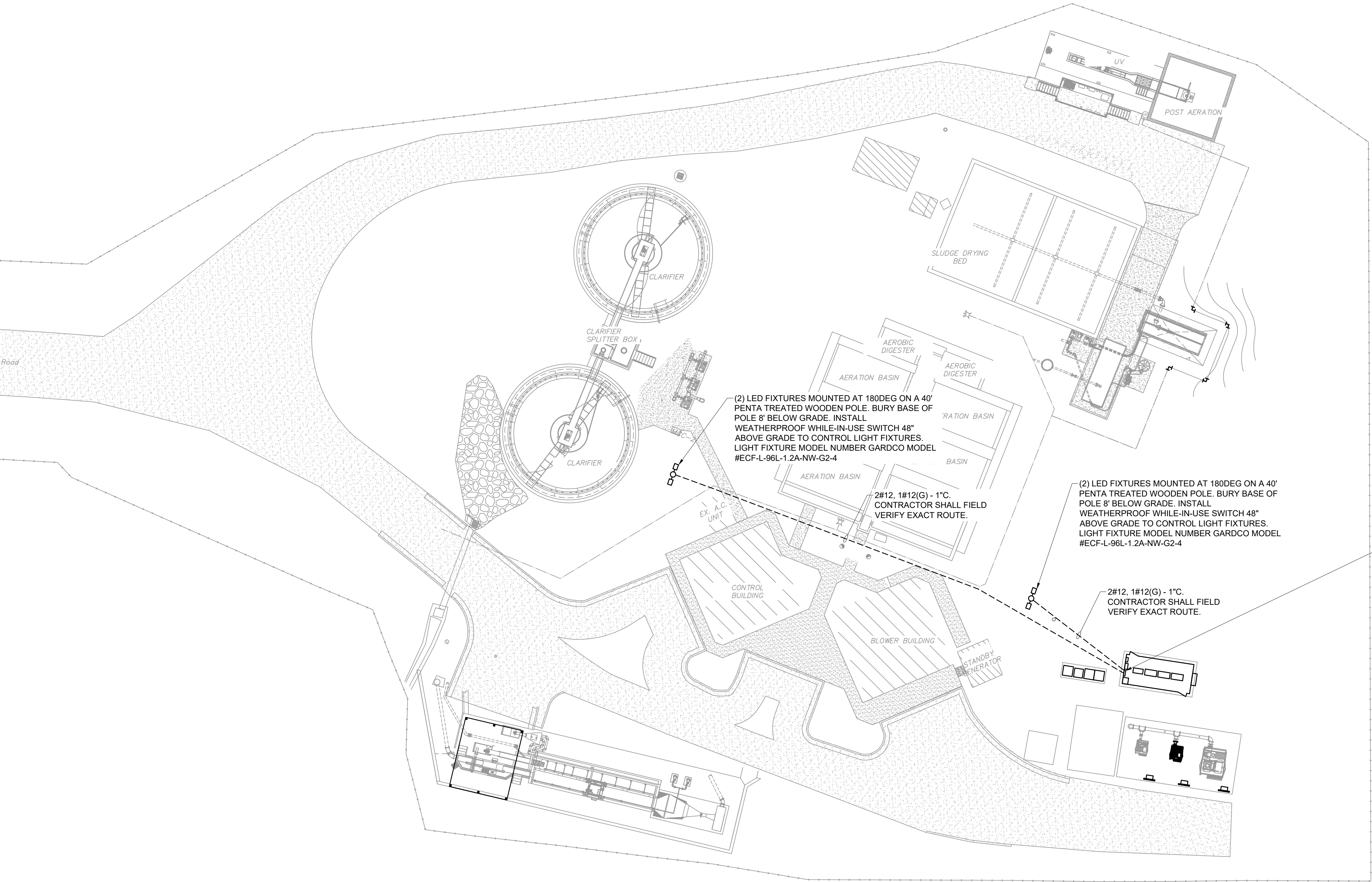
ISSUE	DATE	PROJECT MANAGER:	ENGINEER:	DESIGNER:	DRAWN BY:
60% SET	10.13.2025		MBH	MBH	BR
PERMITTING SET	12.17.2025		JRD		
BID SET	01.20.2026				



DRAWING FILE: C:\Users\mheubach\AppData\Local\Temp\AcPublish_6104E-101.dwg
PLOTTED: Jan 20, 2026 - 8:38am



1 PLAN
E-101 SCALE: 1" = 20'



(2) LED FIXTURES MOUNTED AT 180DEG ON A 40' PENTA TREATED WOODEN POLE. BURY BASE OF POLE 8" BELOW GRADE. INSTALL WEATHERPROOF WHILE-IN-USE SWITCH 48" ABOVE GRADE TO CONTROL LIGHT FIXTURES. LIGHT FIXTURE MODEL NUMBER GARDCO MODEL #ECF-L-96L-1.2A-NW-G2-4

2#12, 1#12(G) - 1"C. CONTRACTOR SHALL FIELD VERIFY EXACT ROUTE.

(2) LED FIXTURES MOUNTED AT 180DEG ON A 40' PENTA TREATED WOODEN POLE. BURY BASE OF POLE 8" BELOW GRADE. INSTALL WEATHERPROOF WHILE-IN-USE SWITCH 48" ABOVE GRADE TO CONTROL LIGHT FIXTURES. LIGHT FIXTURE MODEL NUMBER GARDCO MODEL #ECF-L-96L-1.2A-NW-G2-4

2#12, 1#12(G) - 1"C. CONTRACTOR SHALL FIELD VERIFY EXACT ROUTE.

EXISTING 120V PANEL. INSTALL NEW 20A/1P CIRCUIT BREAKERS FOR NEW LIGHTING CIRCUITS.

ELECTRICAL NOTES:

1. CONDUIT ROUTING SHOWN IS DIAGRAMMATIC. CONTRACTOR SHALL COORDINATE WITH EXISTING UNDERGROUND UTILITIES AND SITE CONDITIONS WHEN ROUTING CONDUIT.

SITE LIGHTING
PLAN



CWSRF WWTF
IMPROVEMENTS
DADEVILLE, ALABAMA
DADEVILLE WATER WORKS & SEWAGE BOARD

GMC# CMGM240012

GMC

2660 Eastchase Lane
Suite 200
Montgomery, AL 36117
T 334.271.3200

ISSUE	DATE
60% SET	10.13.2025
PERMITTING SET	12.17.2025
BID SET	01.20.2026
PROJECT MANAGER:	
ENGINEER:	MBH
DESIGNER:	JRD
DRAWN BY:	MBH
	BR



E-101

DRAWING FILE: C:\Users\mheubach\AppData\Local\Temp\AcPublish_6104E-301.dwg
PLOTTED: Jan 20, 2026 - 8:38am



1
E-301

PLAN
SCALE: 1" = 5'-0"

EXISTING BLOWER #2 FUSED
DISCONNECT. REPLACE EXISTING
FUSES WITH 125A FUSES

REPLACE EXISTING LOAD SIDE CONDUCTORS
WITH NEW 3#2, 1#6(G) CONDUCTORS
BETWEEN DISCONNECT AND NEW BLOWER.
UTILIZE EXISTING 3" CONDUIT

REPLACE EXISTING CONDUCTORS
FROM EXISTING CONDUIT FOR
BLOWER #2. INSTALL NEW 3#2,
1#6(G) CONDUCTORS BETWEEN
VFD AND DISCONNECT.

REMOVE EXISTING 200HP VFD FOR BLOWER #2 AND
REPLACE WITH NEW 50HP HEAVY DUTY VFD. UTILIZE
EXISTING FEEDER CIRCUIT FOR NEW VFD. USE
REDUCING PINS IF REQUIRED TO CONNECT EXISTING
CIRCUIT TO NEW VFD TERMINALS. CONNECT CONTROL
WIRING TO EXISTING BLOWER CONTROL PANEL 'PLC-A'.

ELECTRICAL NOTES:

1. CONDUIT ROUTING SHOWN IS DIAGRAMMATIC. CONTRACTOR
SHALL COORDINATE WITH EXISTING UNDERGROUND UTILITIES
AND SITE CONDITIONS WHEN ROUTING CONDUIT.

VARIABLE FREQUENCY DRIVE

1. BASIS OF DESIGN FOR VFD IS SCHNEIDER ALTIVAR 600 OR
APPROVED EQUAL. MODEL #1 -
ATV660D45T4H2GAWBANFHPXE202EP216+-ALTIVAR 600
ATV660D45T4H2GAWBANFHPXE202EP216EP218EP240E
P268EP271EP273EP279

THE VFD SHALL HAVE THE FOLLOWING PARAMETERS:

- MAIN CIRCUIT BREAKER DISCONNECT 100K AIC RATED SELECTED
FOR 460 VAC 3 PHASE MOTOR
- 50 HORSEPOWER SIZED FOR HEAVY DUTY.
- DRIVE CONTROLLER RATED FOR 74.5 MAX OUTPUT AMPS
- TYPE 1 ENCLOSURE UL508A LABEL RAL7035 (GRAY)
- POWER CIRCUIT W: DRIVE COMBINATION PACKAGE DV/DT MOTOR
FILTER
- CONTROL OPTIONS:
 - EP202 - DRIVE RESET PUSH BUTTON
 - HAND-OFF-AUTO SELECTOR SWITCH
 - START/STOP PUSH BUTTONS SUBSTITUTE 9001K 30MM
OPERATORS EP218
 - SPED POTENTIOMETER
 - PILOT LIGHT OPTIONS:
 - AUTO PILOT LIGHT (YELLOW)
 - OFF PILOT LIGHT (RED) EP216
 - POWER ON PILOT LIGHT (RED)
 - RUN PILOT LIGHT (GREEN)
 - TRIP PILOT LIGHT (YELLOW)
 - AUXILIARY CONTACTS:
 - 1 NO/NC RUN CONTACT
 - 1 NO/NC TRIP CONTACT
 - 1 NO AUTO MODE CONTACT
- A09 - 5% LINE IMPEDANCE
- ELAPSED TIME METER EP240
- OUTPUT FILTER
- EP268 - HIGH DISCHARGE PRESSURE ALARM
- EP271- MOTOR SPACE HEATER (120V 200VA)
- EP273 - ADDITIONAL 250VA CONTROL POWER
- EQ279 - MOTOR OVER TEMPERATURE LOGIC INPUT WITH PILOT
LIGHT
- P14 - PLASTIC SLEEVE WIRE MARKERS
- H14 - TRANSIENT VOLTAGE SUPPRESSOR TYPE 2 SPD 80K

2. VFD SHALL BE CONTROLLED VIA SCADA AND SHALL HAVE RUN
STATUSES, ALARMS, AND HOA POSITION CONNECTED TO SCADA.
VFD SHALL HAVE INPUTS FOR D/O PROBE CONTROL AND HIGH
DISCHARGE PRESSURE. HIGH DISCHARGE PRESSURE SHALL SHUT
VFD DOWN.

CWSRF WWTF
IMPROVEMENTS

DADEVILLE, ALABAMA
DADEVILLE WATER WORKS & SEWAGE BOARD

GMC# CMGM240012

BLOWER VFD
REPLACEMENT



E-301

GMC

2660 Eastchase Lane
Suite 200
Montgomery, AL 36117
T 334.271.3200

